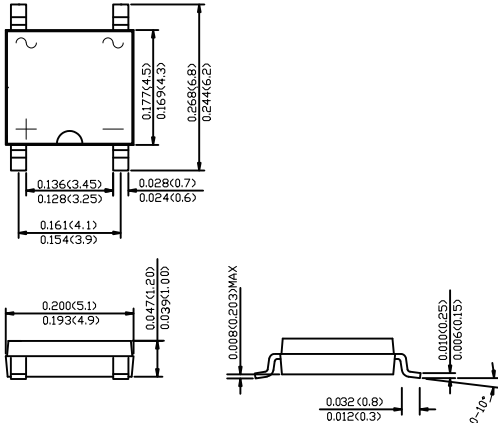


## GLASS PASSIVATED FAST RECOVERY BRIDGE RECTIFIERS

Voltage Range - 200 to 1000 Volts    Current - 0.8/1.0 Ampere

### ABF



Dimensions in inches and (millimeters)

### FEATURES

- ◆ Ideal for printed circuit board
- ◆ Reliable low cost construction utilizing molded plastic technique
- ◆ High temperature soldering guaranteed: 260°C/10 seconds at 5 lbs., (2.3kg) tension
- ◆ Small size, simple installation
- ◆ Leads solderable per MIL-STD-202, Method 208
- ◆ High surge current capability
- ◆ Glass passivated chip junction
- ◆ Green compound(halogen&Sb<sub>2</sub>O<sub>3</sub> free)

### MECHANICAL DATA

**Case:** Molded plastic body

**Terminals:** Plated leads solderable per MIL-STD-750, Method 2026

**Polarity:** Polarity symbols marked on case

**Mounting Position:** Any

### MAXIMUM RATINGS AND ELECTRICAL CHARACTERISTICS

Ratings at 25°C ambient temperature unless otherwise specified.

Single phase half-wave 60Hz, resistive or inductive load, for capacitive load derate current by 20%.

	SYMBOLS	RABF2	RABF4	RABF6	RABF8	RABF10	UNITS
Maximum repetitive peak reverse voltage	$V_{RRM}$	200	400	600	800	1000	V
Maximum RMS voltage	$V_{RMS}$	140	280	420	560	700	V
Maximum DC blocking voltage	$V_{DC}$	200	400	600	800	1000	V
Maximum average forward rectified current On glass-epoxy P.C.B.(Note1) On aluminum substrate(Note2)	$I_{F(AV)}$	0.8 1.0					A
Peak forward surge current, 8.3ms single half sine-wave superimposed on rated load	$I_{FSM}$	30					A
Maximum instantaneous forward voltage drop per leg at 0.4A	$V_F$	1.3					V
Maximum DC reverse current at rated DC blocking voltage	$I_R$	5.0 500					uA uA
Typical thermal resistance(NOTE 3)	$R_{\theta JL}$ $R_{\theta JA}$	28 80					°C/W
Maximum reverse recovery time (NOTE 4)	$t_{rr}$	150		250	500		ns
Operating temperature range	$T_J$	-55 to +150					°C
storage temperature range	$T_{STG}$	-55 to +150					°C

NOTES:1.On glass epoxy P.C.B. mounted on 0.05x0.05"(1.3x1.3mm) pads.

2.On aluminum substrate P.C.B. with an area of 0.8"x0.8"(20x20mm) mounted on 0.05X0.05"(1.3X1.3mm) solder pad.

3.Thermal resistance form junction to ambient and junction to lead mounted on P.C.B. with 0.2X0.2"(5X5mm) copper pads.

4.Reverse recovery condition  $I_F=0.5A$ ,  $I_R=1.0A$ ,  $t_{rr}=0.25A$

FIG.1 FORWARD DERATING CURVE

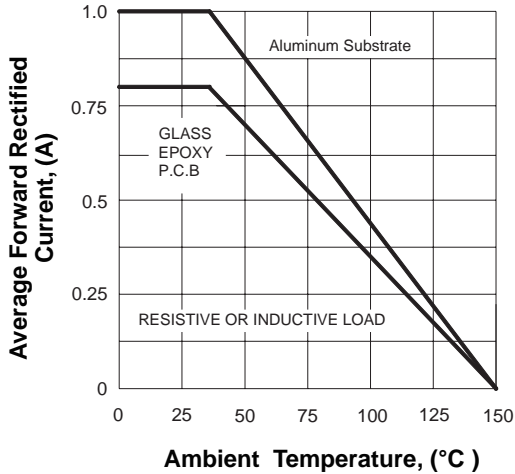


FIG.2 PEAK FORWARD SURGE CURRENT

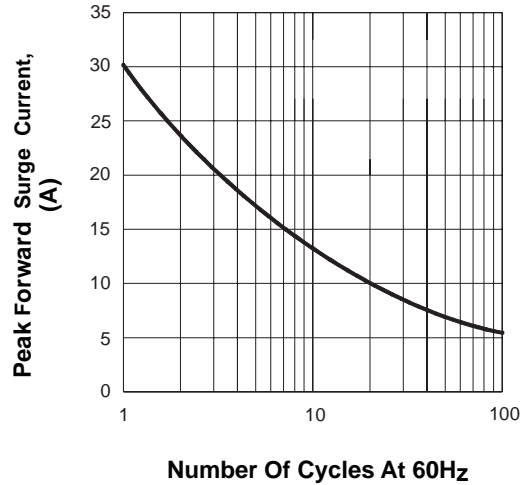


FIG.3 TYPICAL FORWARD CHARACTERISTICS

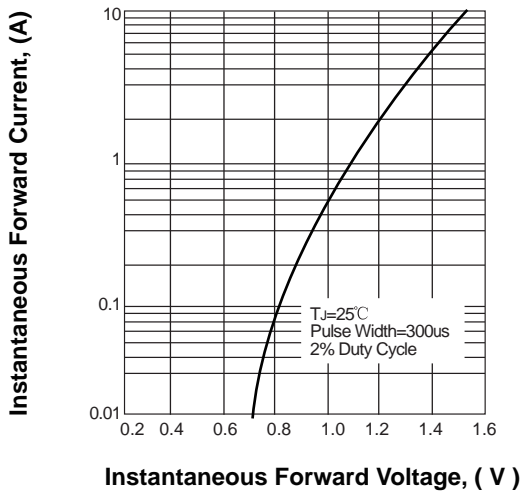


FIG.4 TYPICAL REVERSE CHARACTERISTICS

